



SMART TOUR GUIDE

# CONTENTS

## TRANSPORTATION

- FROM JEJU INT AIRPORT TO VENTIMO HOTEL ... 1
- FROM VENTIMO HOTEL TO JEJU INT AIRPORT ... 2
- OTHER TRANSPORTATIONS ... 3
- RENTAL CAR COMPANY ... 4

## RECOMMENDATIONS

- JEJU BLACK PORK ... 5
- SEA FOODS & SASHIMI ... 6
- VEGAN & SALAD ... 7
- HALAL FOOD ... 8
- VENTIMO'S PICK RESTAURANTS ... 9
- ATTRACTIONS ... 10

# PUBLIC TRANSPORTATION

FROM JEJU INT AIRPORT TO VENTIMO HOTEL



1

Take the Bus no. 331 at 'Jeju international airport 6' station

[Bus no. 331]

- First bus: 7:02 AM
- Last bus: 21:59 PM
- The bus comes in every 50 minutes



2

Get off at Sin Gwang JCT station(2 stations away from the airport) you can find our hotel across from the bus station.



3

Cross the road to the opposite side. And go straight to the left for 50m. Then you can find our hotel on your right side



Jeju bus information system

<http://bus.jeju.go.kr/> (English available)

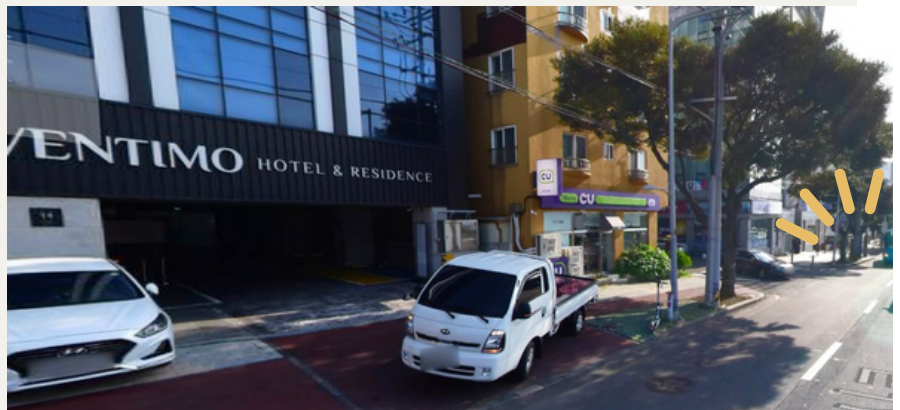
# PUBLIC TRANSPORTATION

FROM VENTIMO HOTEL TO JEJU INT AIRPORT



1

Find the Sin gwang JCT bus station close from the hotel.



2

Take the Bus no. 331 at Sin gwang JCT station

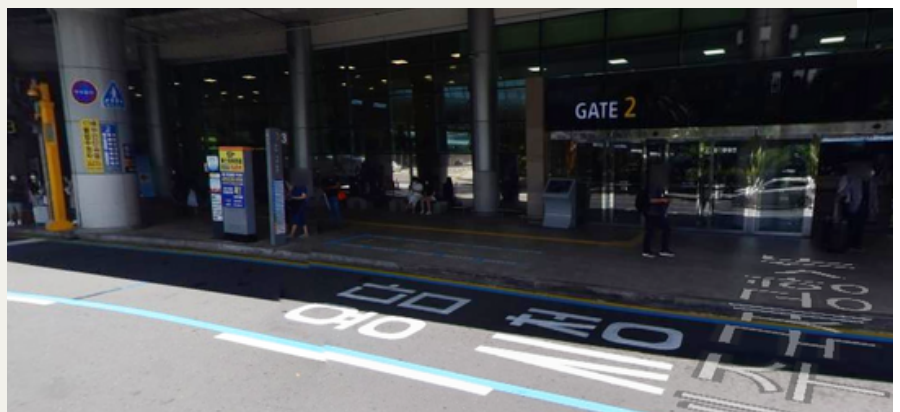
[Bus no. 331]

- First bus: 6:30 AM
- Last bus: 21:50 PM
- The bus comes in every 50 minutes



3

Get off at Jeju international airport station(2 stations away from the Sin gwang JCT station)



Jeju bus information system

<http://bus.jeju.go.kr/> (English available)

# OTHER TRANSPORTATION

FOR TRAVELING AROUND JEJU

1

## Taxi

- App: Kako T  
(Korean phone number or Kakao account is required)
- Call taxi company: +82-064-711-6666 (only Korean)
- English taxi tour: +82-010-5231-4182 (Jimmy oh)  
(Whats app available)  
ojp0211@gmail.com

2

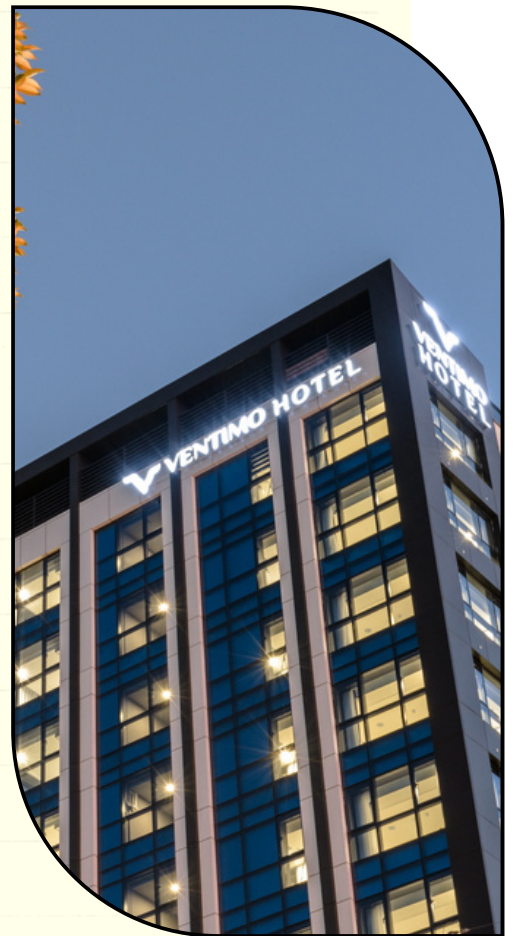
## Jumbotaxi

- Number for booking: +82-010-3699-1016
- 20,000 Won to the airport

3

## Jeju city tour bus

- <https://www.jejuvcitybus.com/>  
(English available)

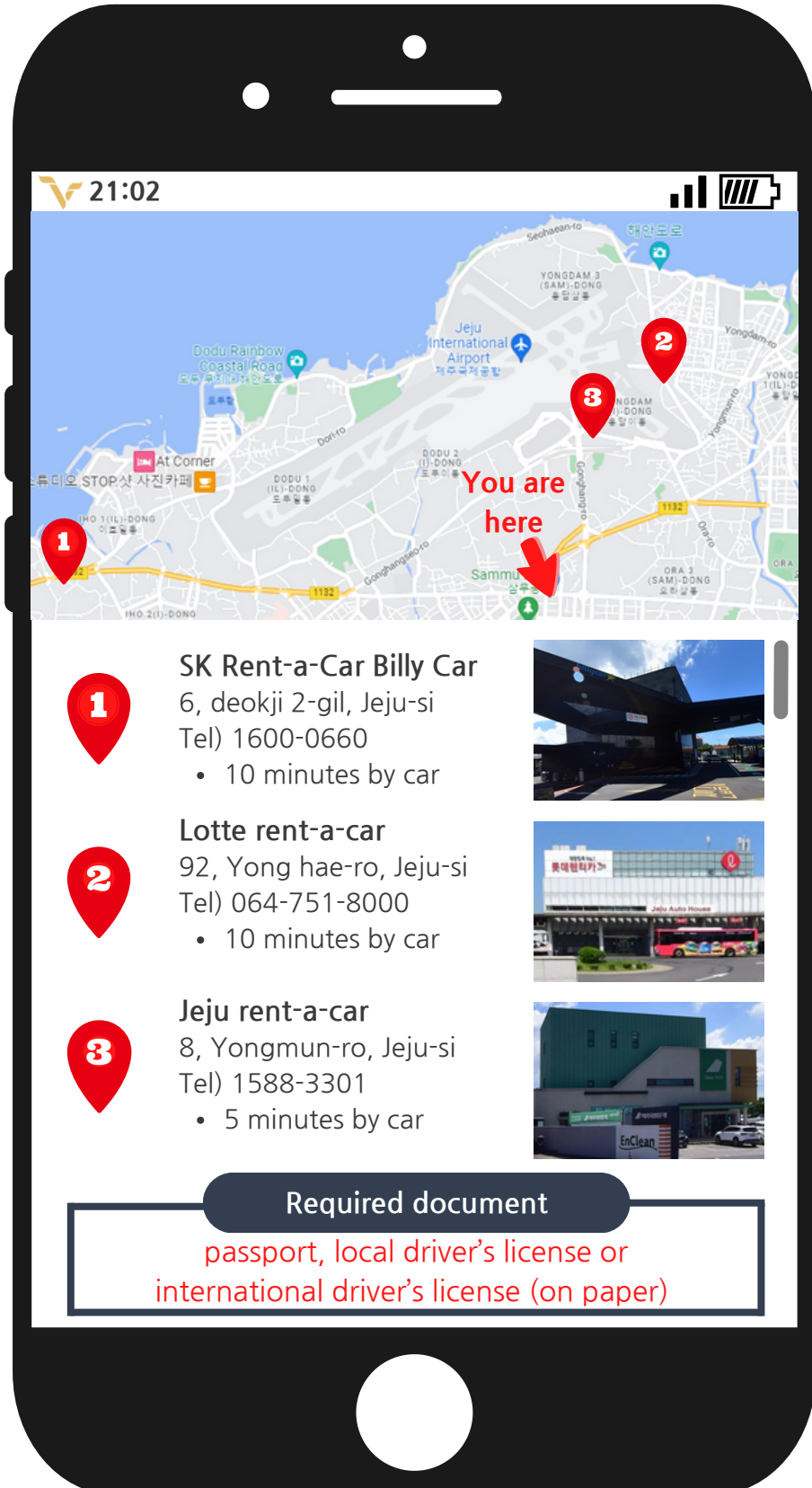


### Hotel address

제주시특별자치도 제주시 연삼로 14  
14, Yeonsam-ro, Jeju-si, Jeju-do

# RENTAL CAR COMPANY

FOREIGNER RENT-A-CAR SERVICE



**SK Rent-a-Car Billy Car**  
6, deokji 2-gil, Jeju-si  
Tel) 1600-0660  
• 10 minutes by car



**Lotte rent-a-car**  
92, Yong hae-ro, Jeju-si  
Tel) 064-751-8000  
• 10 minutes by car



**Jeju rent-a-car**  
8, Yongmun-ro, Jeju-si  
Tel) 1588-3301  
• 5 minutes by car



## Required document

passport, local driver's license or international driver's license (on paper)



## JEJU BLACK PORK RESTAURANTS

# AROUND HOTEL

### Jeju-Yuk daepyo

7895, Iljuseo-ro, Jeju-si

Tel) 064-747-0092

Operating hours: 13:00~ 23:00 (everyday)

- 5 mins by walk



### Jeju-Doldam black pork

35, Yeondong 7-gil, Jeju-si

Tel) 064-742-6090

Operating hours: 13:00 ~ 23:50 (everyday)

- 15 mins by walk



### Jewon-kaljib

19 Jewon-gil, Jeju-si

Tel) 064-747-3310

Operating hours: 12:00~ 05:00 (everyday)

- 15 mins by walk





## SEA FOOD RESTAURANTS AROUND HOTEL

### Jeju-Mosalmool

14, Sammuro 3-gil, Jeju-si

Tel) 064-713-0309

Operation hours: 16:30 ~ 24:00 (everyday)

- 5 mins by walk



### Jeju-Sanjimool

53, Sindae-ro 10-gil, Jeju-si

Tel) 064-745-5799

Operation hours: 10:00 ~ 22:00 (everyday)

- 10 mins by walk



### Marado sashimi

3, Singwang-ro 8-gil, Jeju-si

Tel) 064-746-2286

Operating hours: 13:00~ 24:00 (everyday)

- 15 mins by walk







## VEGAN & SALAD RESTAURANTS AROUND HOTEL

### Salad basket

46, Sammu-ro, Jeju-si

Tel) 0507-1319-1778

Operation hours: 09:00 ~ 01:00 (everyday)

- 10 mins by walk



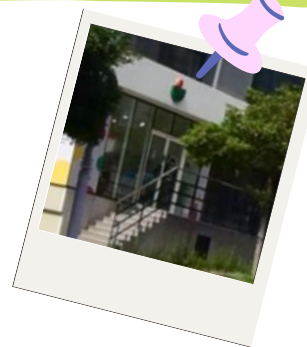
### Poke all day (Salad & poke)

22, Nohyeong 8-gil, Jeju-si

Tel) 010-9419-2534

Operation hours: 10:00~20:00 (every  
Sunday closed)

- 10 mins by car



### Café 901 (Vegan café)

2977-10, 1100-ro, Jeju-si

Tel) 0507-1402-9022

Operation hours: 09:00~16:00 (every  
Tuesday closed)

- 15 mins by car





## HALAL FOOD RESTAURANTS AROUND HOTEL

### Wardah Restaurant

24-1, Gwandeok-ro 8-gil, Jeju-si

Tel) 0507-1417-1470

Operation hours: 12:00 ~ 22:00 (every week  
Sunday closed)

\* 10 mins by car



### Baghdad

34, Gwandeok-ro 8-gil, Jeju-si

Tel) 064-757-8182

Operation hours: 11:00~23:00 (every  
Wednesday closed)

\* 10 mins by car



### Asalam restaurants

7, Jungang-ro 2-gil, Jeju-si

Tel) 0504-3139-6652

Operation hours: 12:00~22:00 (every  
Wednesday closed)

\* 15 mins by car





VENTIMO'S PICK  
RESTAURANTS  
**AROUND  
HOTEL**

**Café Baron (Bakery cafe)**

14, Singwang-ro 1-gil, Jeju-si

Tel) 064-742-4885

Operation hours: 08:30 ~ 21:00 (every week  
Sunday closed)

\* 3 mins by walk



**Stone island tap house (Pizza & pub)**

16, Sammu-ro 7-gil, Jeju-si

Tel) 0507-1410-9009

Operation hours: 17:00~25:00 (everyday)

\* 5 mins by walk



**Kyochon chicken (Fried chicken)**

50, Sammu-ro, Jeju-si

Tel) 064-711-0331

Operation hours: 12:00~24:00 (everyday)

\* 7 mins by walk



# ATTRACTIONS

AROUND THE HOTEL






21:02

**1** Sammu Park  
48-9, Sindae-ro 10-gil, Jeju-si  
• 5 mins by walk

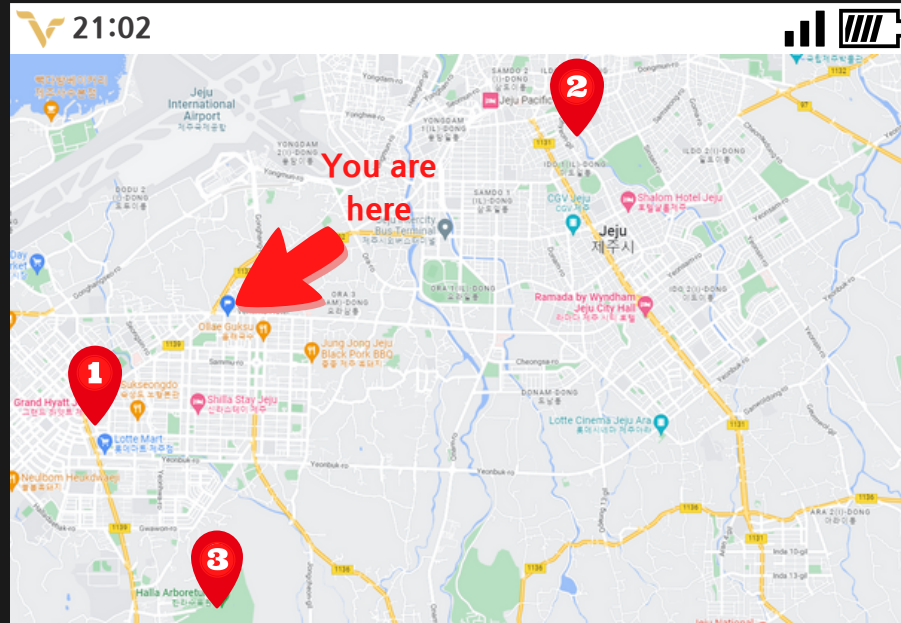
**2** Nohyeong supermarket(museum)  
89 Nohyeong-ro, Jeju-si  
09:30~19:00 (everyday)  
Tel) 064-751-8000  
• 15 minutes by car

**3** Iho beach  
1665-13, Ihoil-dong, Jeju-si,  
• 10 minutes by car



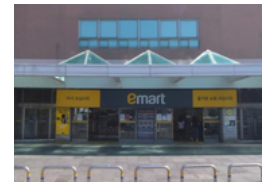
# ATTRACTIONS

## MARKETS AROUND THE HOTEL



### E-mart

3348, 1100-ro, Jeju-si  
10:00~23:00  
(Check off day at website)  
• 10 mins by car



### Dongmun traditional market

20, Gwandeok-ro 14-gil, Jeju-si  
08:00~21:00 (everyday)  
• 15 minutes by car



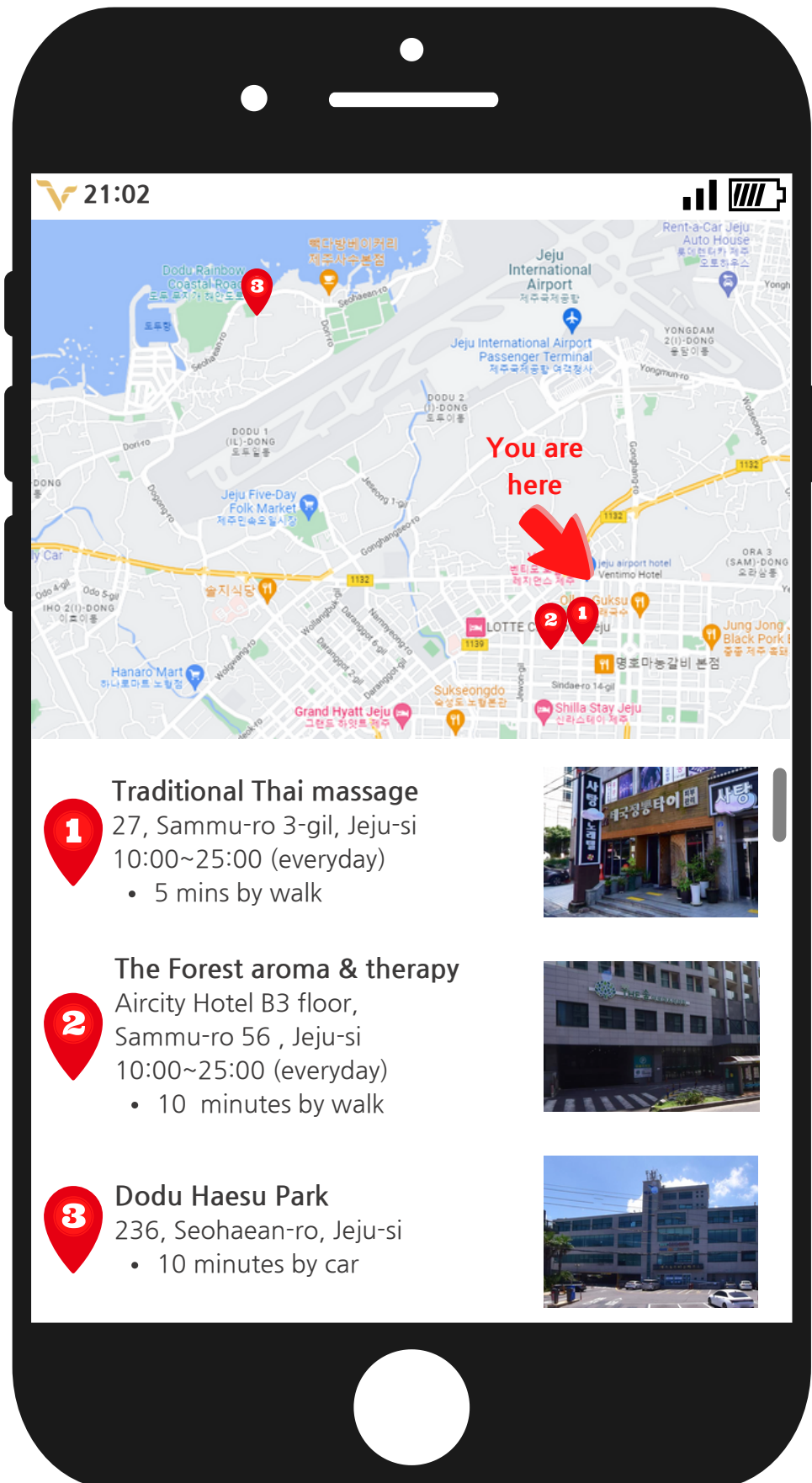
### Halla Arboretum Night market

69, Eunsu-gil, Jeju-si  
• 15 minutes by car



# ATTRACTIONS

## SAUNA & MASSAGE AROUND THE HOTEL



**Traditional Thai massage**  
27, Sammu-ro 3-gil, Jeju-si  
10:00~25:00 (everyday)  
• 5 mins by walk



**The Forest aroma & therapy**  
Aircity Hotel B3 floor,  
Sammu-ro 56 , Jeju-si  
10:00~25:00 (everyday)  
• 10 minutes by walk



**Dodu Haesu Park**  
236, Seohaean-ro, Jeju-si  
• 10 minutes by car

